

PRO USA

By Deplorable Knitter



Materials

Size US 6 & US 7 16" (or longer for magic loop) circular needles
Size 7 DPN's
Approximately 90 yds Main Color (MC)
Worsted weight yarn
Approximately 20 yds each of
Contrasting Colors (CC: Red, White and
Blue) worsted weight yarn
Stitch markers

Abbreviations

K - Knit
P - Purl
K2tog - knit 2 together
PM - Place Marker
SM - Slip Marker

Gauge

24 stitches x 24 rows = 4 inches
with US 7 needles in the round in
stockinette stitch

Measurements

Completed hat should be approximately
8 inches wide and 9 inches tall.
Comfortably fits 21"-23" head

Pattern

With MC and smaller needles, use Long
Tail Cast-on or your favorite, cast on
100 stitches. Join for working in the
round, being careful not to twist. PM to
denote start of the row

Work in a k2, p2 rib for 1 1/2 inches.
(approximately 8 rows)

Switch to size 7 needles.

Knit 1 row.

Begin working chart.

All rows are worked from right to left, in
the round.

Repeat columns 1- 50 twice. There will
be two complete repeats of the chart.

After completing chart, work in MC until
hat measures 7 inches from cast on
edge.

Begin decreasing as follows (use DPN's
when necessary, if you are not using
Magic Loop):

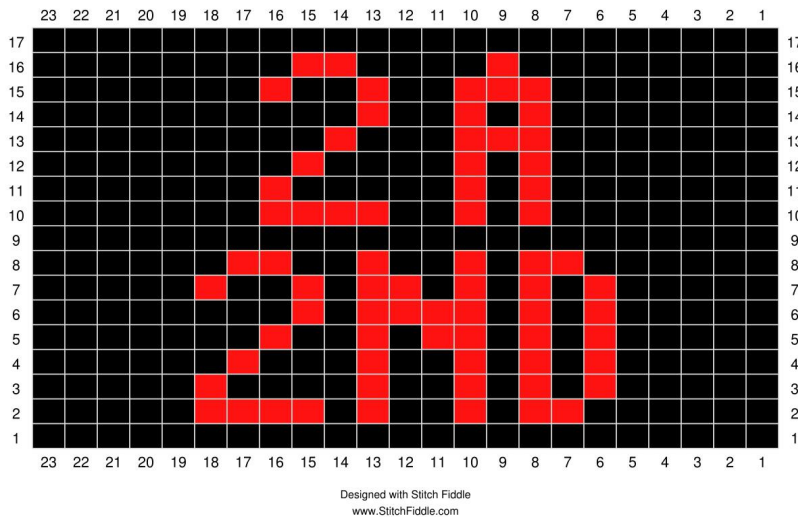
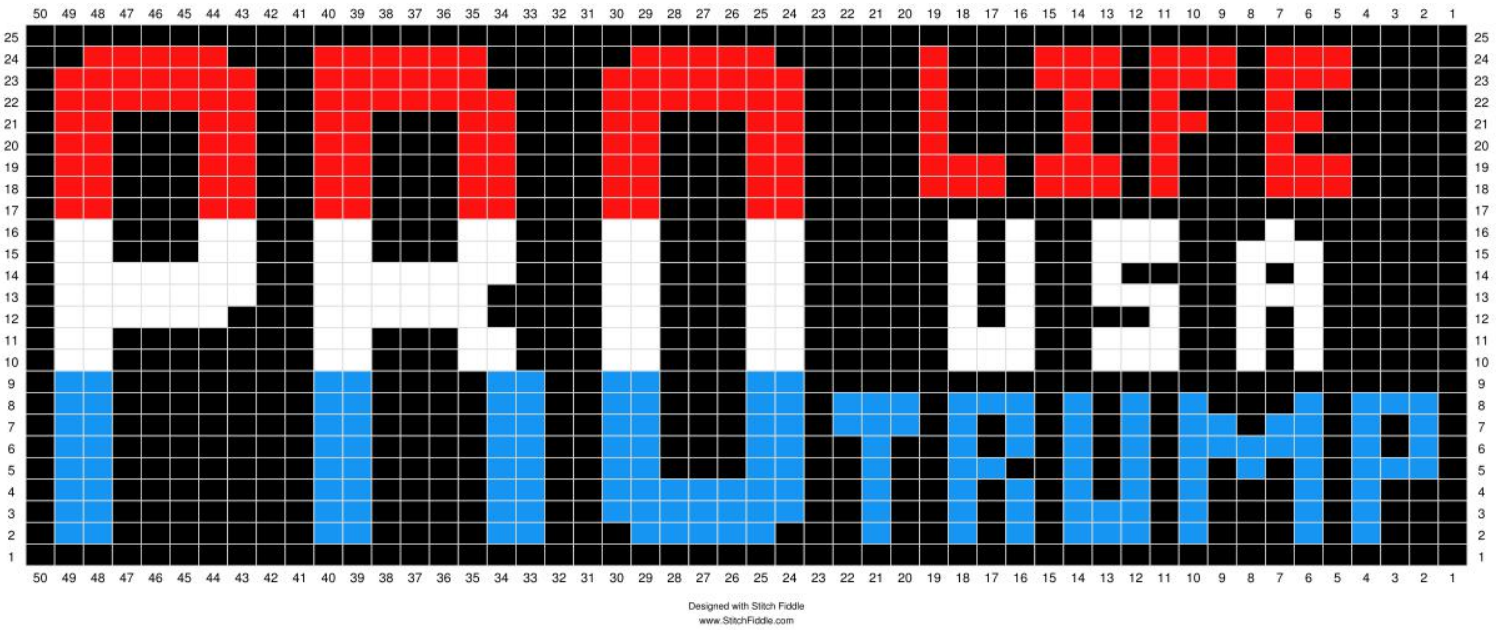
- 1) K8, k2tog, PM x10 times
- 2) Knit all
- 3) K7, k2tog, SM x10 times
- 4) Knit all
- 5) K6, k2tog, SM x 10 times
- 6) Knit all
- 7) K5, k2tog, SM x 10 times
- 8) Knit all
- 9) K4, k2tog, SM x 10 times
- 10) knit all
- 11) K3, k2tog, SM x 10 times
- 12) knit all
- 13) K2, k2tog, SM x 10 times
- 14) knit all
- 15) K1, k2tog, SM x 10 times
- 16) knit all
- 17) k2tog , removing all markers as
you go.

Cut yarn and thread through remaining
10 stitches.

Weave in ends. Enjoy!

PRO USA

By Deplorable Knitter



Optional Chart.
If you would like to substitute 2A or 2ND for one of the phrases use the optional chart. Follow the chart as written, using the correct color to coordinate with the PRO.